



Chameleon Colour Systems, a world leader and exporting to over 57 countries, design and manufacture mixing and tinting equipment for the paint and coatings industries.

Since 1992, we have provided innovative and intelligent mixing solutions combined with an unrelenting commitment to reduced ownership costs.

Today, we are positioned to lead with European and Asian manufacturing, a global service and support network and an innovative universal product portfolio.

#### Providing you with:

- Intelligent solutions
- Competitive advantage through innovation
- Outstanding quality and reliability
- Unparalleled customer service
- Global service and support network



Exporting  
to over 57  
countries  
worldwide.



#### For More Information

Please visit our website [www.chameleon.ie](http://www.chameleon.ie)  
or contact our Head Office:

Chameleon Colour Systems Ltd,  
Business Park, Weir Road, Tuam,  
Co. Galway,  
Ireland.

Tel: +353 93 25392

Fax: +353 93 25394

E-mail: [sales@chameleon.ie](mailto:sales@chameleon.ie)

[www.chameleon.ie](http://www.chameleon.ie)



## Intelligent Mixing Solutions

...just press start

[www.chameleon.ie](http://www.chameleon.ie)





Made in Ireland, our shakers, mixers and dispensers set the standard in the paint and coatings industries.

## Our Products

...just press start



The Intelligent Shaker

### iShake Vibrational Shaker

- iShake recognises the container size and automatically selects the optimal shaking speed, shaking time and clamping pressure
- iShake will carry out self-cleaning at regular intervals
- Unique 'force clamp' feature
- Driveshaft creates 80% more centrifugal force than equivalent models
- Soft-start reduces colorant over hang on lid
- Customise parameters via LED screen
- On screen diagnostics
- 'Just Press Start'

#### SPECIFICATIONS:

- Mixing action: Vibrational
- Typical Application: Paints, Plasters and inks in metal & plastic containers up to 40 kg (40cm x Ø 36,5cm)
- Motor power: 0,75kW with frequency inverter
- Dimensions (cm): 117(h), 67(w), 72(d)



Perfect for Point of Sale

### iMix Gyroscopic Mixer

- Suitable for mixing industrial size paint cans at point of sale
- iMix will automatically recognise the container size and select the optimal mixing speed (rpm) and clamping pressure
- Multiple can mixing possible
- Large door and pull out tray with automatic clamping & unclamping
- Clear controls and large LCD display
- Gear cover for added protection
- Easy access for service
- Industrial grade components

#### SPECIFICATIONS:

- Mixing action: Gyroscopic / biaxial with automatic speed control
- Typical Application: Paints, Plasters and inks in metal & plastic containers up to 35 kg (42cm x Ø 36cm)
- Motor power: 1.1kW with frequency inverter
- Dimensions (cm): 101 (h), 73 (w), 82 (d)



Faster, Economical Tinting

### Easy Colour Manual Dispenser

- 3 litre canisters with Stainless Steel 3 oz. (100ml) pumps for fast accurate tinting
- Unique Auto-lock® frees both hands for easy dispensing
- 12, 16, 20 & 24 canister configurations
- ETP seals available as an option for solvent based colorants
- Gauges in 1/48us (0.616ml), 1/48usm (0.65ml) or ml (1ml). Other gauges on request
- Patented Smart Gauges® provide exceptional accuracy with a single pump (1/384 fl oz, 0.01mls.)
- Programmable colorant stirring



The Industry Standard

### eShake Vibrational Shaker

- Based on the mechanical design of iShake
- A standard electronic system with a single shaking speed
- Common spare parts with iShake
- A unique clamping action that eliminates can leaks and crushing
- Easy to service with solid state electrics and simple controls

#### SPECIFICATIONS:

- Mixing action: Vibrational
- Typical Application: Paints, Plasters and inks in metal & plastic containers up to 40 kg (40cm x Ø 36cm)
- Motor power: 0,75kW with clamp motor
- Dimensions (cm): 117 (h), 67 (w), 72 (d)



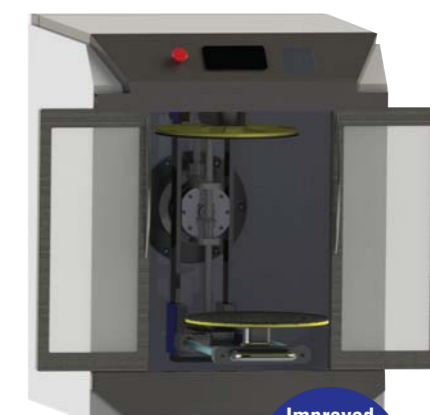
The Professional Mixer

### RGM Professional Gyroscopic Mixer

- Heavy Duty Mixer suitable for mixing large containers in industrial locations
- RGM Professional will automatically recognise the container size and select the optimal mixing speed (rpm) and clamping pressure
- Multiple can mixing possible
- Large door and pull out tray with automatic clamping & unclamping
- Clear controls and large LCD display
- Gear cover for added protection
- Easy access for service
- Industrial grade heavy duty components

#### SPECIFICATIONS:

- Mixing action: Gyroscopic / biaxial with automatic speed control
- Typical Application: Paints, Plasters and inks in metal & plastic containers up to 40 kg (46cm x Ø 36cm)
- Motor power: 1.1kW with frequency inverter
- Dimensions (cm): 102 (h), 76 (w), 80 (d)



Improved Productivity and Ergonomics

### Premium "Warehouse" Gyroscopic Mixer

#### Coming Soon

- Large sliding doors – perfect for use with conveyor and production systems
  - Load directly from conveyor or from full length pull out tray
  - Set the loading height to effortlessly load heavy containers
- Faster clamping / unclamping
- All Internal gears covered from paint spillages
- Release hole for paint spillages
- More timer options
- Programmable mixing times and speeds
- Suitable for offset inks up to ~ 400 Pa s
- Container height up to 49cm